

# XP6-R

## Six Relay Control Module



Intelligent Fire Alarm Control Panels

### General

NOTIFIER's XP6-R six-relay control module provides an intelligent fire alarm system with six Form-C relays.

The first module is addressed from 01 to 154 while the remaining modules are automatically assigned to the next five higher addresses. Provisions are included for disabling a maximum of three unused modules. A single isolated set of dry relay contacts is provided for each module address, which is capable of being wired for either a normally-open or normally-closed operation. The module allows the control panel to switch these contacts on command. No supervision is provided for the controlled circuit.

Each XP6-R module has panel-controlled green LED indicators. The panel can cause the LEDs to blink, latch on, or latch off.

### Features

- Six addressable Form-C relay contacts.
- Removable 12 AWG (3.25 mm<sup>2</sup>) to 18 AWG (0.9 mm<sup>2</sup>) plug-in terminal blocks.
- Status indicators for each point.
- Unused addresses may be disabled.
- Rotary address switches.
- FlashScan® or CLIP operation.
- Mount one or two modules in a BB-XP cabinet (optional).
- Mount up to six modules on a CHS-6 chassis in a CAB-3 Series, CAB-4 Series, EQ Series, or BB-25 cabinet (optional).
- Mounting hardware included.

### Specifications

**Standby current:** 1.45 mA (SLC current draw with all addresses used; if some addresses are disabled, the standby current decreases).

**Alarm current:** 32 mA (assumes all six relays have been switched once and all six LEDs solid ON).

**Temperature range:** 32°F to 120°F (0°C to 49°C).

**Humidity:** 10% to 93% noncondensing.

**Dimensions:** 6.8" (172.72 mm) high x 5.8" (147.32 mm) wide x 1.0" (25.40 mm) deep.

**Shipping weight:** 1.1 lb. (0.499 kg) including packaging.

**Mounting options:** CHS-6 chassis, BB-25 cabinet, BB-XP cabinet, CAB-3 Series (see DN-3549) cabinet, CAB-4 Series (see DN-6857) cabinet, or EQ Series cabinet.

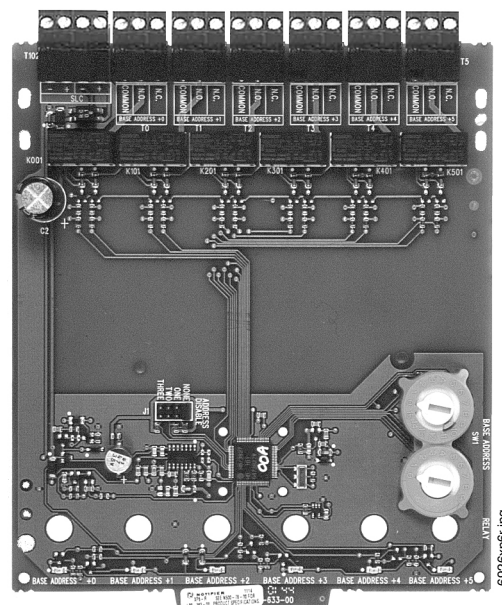
**Wire gauge:** 12 AWG (3.25 mm<sup>2</sup>) to 18 AWG (0.9 mm<sup>2</sup>).

**Maximum SLC wiring resistance:** 40 or 50 ohms, panel dependent.

**Relay current:** 30 mA/relay pulse (15.6 ms pulse duration), pulse under panel control.

**Relay contact ratings:** 30 VDC; 70.7 VAC.

**Current ratings:**



- 3.0 A @ 30 VDC maximum, resistive, non-coded.
- 2.0 A @ 30 VDC maximum, resistive, coded.
- 1.0 A @ 30 VDC maximum, inductive (L/R = 2 ms), coded.
- 0.5 A @ 30 VDC maximum, inductive (L/R = 5 ms), coded.
- 0.9 A @ 110 VDC maximum, resistive, non-coded.
- 0.9 A @ 125 VAC maximum, resistive, non-coded.
- 0.7 A @ 70.7 VAC maximum, inductive (PF = 0.35), non-coded.
- 0.3 A @ 125 VAC maximum, inductive (PF = 0.35), non-coded.
- 1.5 A @ 25 VAC maximum, inductive (PF = 0.35), non-coded.
- 2.0 A @ 25 VAC maximum, inductive (PF = 0.35), non-coded.

### Agency Listings and Approvals

These listings and approvals apply to the modules specified in this document. In some cases, certain modules or applications may not be listed by certain approval agencies, or listing may be in process. Consult factory for latest listing status.

- **UL Listed:** S635
- **ULC Listed:** S635 (XP6-RA)
- **MEA Listed:** 368-01-E
- **CSFM:** 7300-0028:219
- **Maryland State Fire Marshall:** Permit # 2099
- **FM Approved** (Light Protective Signaling Only)

## Product Line Information

**XP6-R:** Six-relay control module.

**XP6-RA:** Same as above with ULC Listing.

**BB-XP:** Optional cabinet for one or two modules. Dimensions, DOOR: 9.234" (23.454 cm) wide (9.484" [24.089 cm] including hinges), x 12.218" (31.0337 cm) high, x 0.672" (1.7068 cm) deep; BACKBOX: 9.0" (22.860 cm) wide (9.25" [23.495 cm] including hinges), x 12.0" (30.480 cm) high x 2.75" (6.985 cm); CHASSIS (installed): 7.150" (18.161 cm) wide overall x 7.312"

(18.5725 cm) high interior overall x 2.156" (5.4762 cm) deep overall.

**BB-25:** Optional cabinet for up to six modules mounted on CHS-6 chassis (below). Dimensions, DOOR: 24.0" (60.96 cm) wide x 12.632" (32.0852 cm) high, x 1.25" (3.175 cm) deep, hinged at bottom; BACKBOX: 24.0" (60.96 cm) wide x 12.550" (31.877 cm) high x 5.218" (13.2537 cm) deep.

**CHS-6:** Chassis, mounts up to six modules in a CAB-3 Series (see DN-3549), CAB-4 Series (see DN-6857), or EQ Series (see DN-60229) cabinet.

---

Notifier® and FlashScan® are registered trademarks of Honeywell International Inc.

©2009 by Honeywell International Inc. All rights reserved. Unauthorized use of this document is strictly prohibited.



This document is not intended to be used for installation purposes.  
We try to keep our product information up-to-date and accurate.  
We cannot cover all specific applications or anticipate all requirements.  
All specifications are subject to change without notice.



Made in the U.S. A.

For more information, contact Notifier. Phone: (203) 484-7161, FAX: (203) 484-7118.  
[www.notifier.com](http://www.notifier.com)